

1

2

3

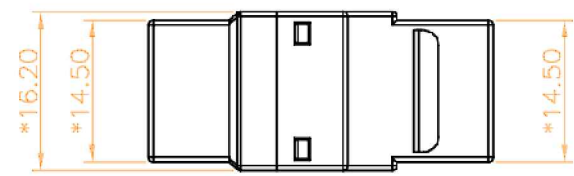
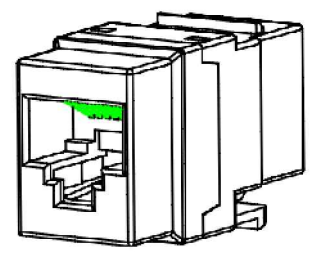
4

5

6

7

A



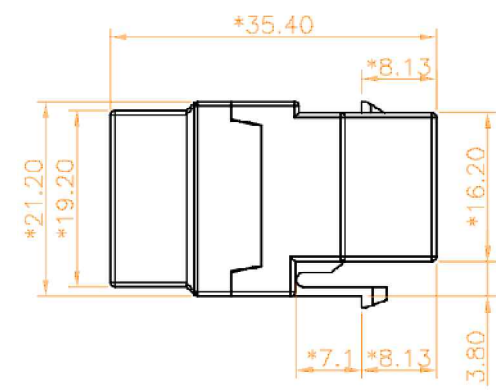
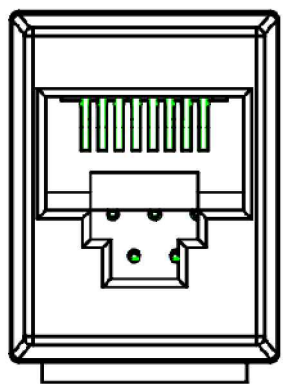
**ELECTRICAL:**

- 1. VOLTAGE RATING : 125 VAC.
- 2. CURRENT RATING : 1.5 AMP.
- 3. CONTACT RESISTANCE : 100 MILLIOHMS MAX.
- 4. INSULATION RESISTANCE : 1000 MEGOHMS MIN. @ 500 VDC.
- 5. DIELECTRIC STRENGTH : 750 VAC 60Hz, 1MIN.

B

**MECHANICAL:**

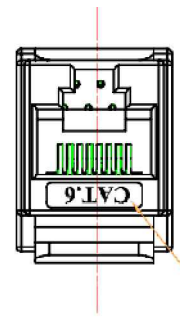
- 1. HOUSING MATERIAL : PC. UL94V-0. BLACK
- 2. CONTACT MATERIAL : PHOSPHOR BRONZE T=0.35mm.
- 3. PLATING : 50U" GOLD PLATING OVER NICKEL.
- 4. INSERT MATERIAL : GLASS FILLED POLYDSTER UL94V-0.
- 5. PCB MATERIAL : FR-4 THICKNESS 1.6mm.



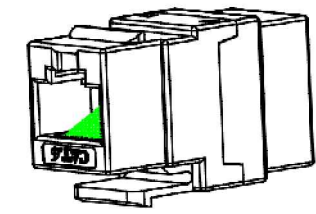
**ENVIRONMENTAL:**

- 1. STORAGE : -40°C TO +85°C.
- 2. OPERATION : 0°C TO +70°C.

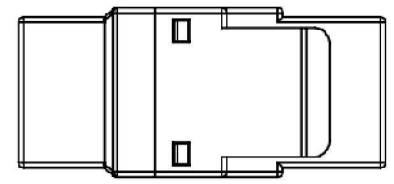
D



LOGO ABOVE THE SURFACE 0.20mm



E



F

**RoHS compliant**  
Unit: mm

|           |       |     |              |            |        |          |            |         |                             |
|-----------|-------|-----|--------------|------------|--------|----------|------------|---------|-----------------------------|
| Scale     | Free  |     |              |            |        |          | Date       | Name    | Customer-No.                |
| TOLERANCE |       |     |              |            |        | Drawn    | 22.09.2014 | Joanna  |                             |
| .X        | ±0.20 |     |              |            |        | Approved | 22.09.2014 | Joanna  | ASSMANN WSW-No.<br>A-TA3535 |
| .XX       | ±0.15 |     |              |            |        |          |            |         |                             |
| .XXX      | ±0.10 |     |              |            |        |          |            |         |                             |
| DIM       | TOL   |     |              |            |        |          |            |         | Drawing-No.                 |
| Angle     | ±5°   |     |              |            |        |          |            |         | ASS 6588 CO                 |
| X.X°      | ±X°   | ©   | Drawn        | 22.09.2014 | Joanna |          |            |         | rev00                       |
| Angle     | TOL   | Id. | Modification | Date       | Name   |          |            | Replace | Sheet                       |

A

B

C

D

E

F

G

H

1

2

3

4

5

6

7

SV3669