

SAFETY ORGANIZATION(S):

THIS FILTER HAS BEEN FORMALLY RECOGNIZED, CERTIFIED OR APPROVED BY THE LISTED AGENCY. THEREFORE, ALL TEST/REQUIREMENTS SPECIFIED IN THE LATEST REVISION OF THE FOLLOWING AGENCY STANDARDS HAVE BEEN MET:

UL RECOGNIZED  
UL 1283  
CSA CERTIFIED  
CSA 22.2, NO.0,0.4,8  
VDE APPROVED  
VDE 565-3

OPERATING SPECIFICATIONS:

LINE VOLTAGE/CURRENT:  
1 AMP., 120/250 VAC  
1 AMP./40°C, 250 VAC  
50-60Hz  
30°C  
LINE FREQUENCY:  
MAX. CASE RISE  $\theta$  RATED CURRENT:  
MAX. LEAKAGE CURRENT, EACH  
LINE TO GROUND  
OPERATING AMBIENT TEMP. RANGE:  
.5 mA at 120V 60 Hz  
1.0 mA at 250V 50 Hz  
-10°C TO +40°C  $\theta$  RATED CURRENT,  $I_r$

IN AN AMBIENT,  $T_a$ , HIGHER THAN 40°C, THE MAXIMUM OPERATING CURRENT,  $I_o$ , IS AS FOLLOWS:

$$I_o = I_r \sqrt{\frac{85-T_a}{45}}$$

RELIABILITY SPECIFICATIONS:

STORAGE TEMPERATURE:  
-40°C TO +85°C  
HUMIDITY:  
21 DAYS  $\theta$  40°C 95% RH  
CURRENT OVERLOAD TEST:  
6 TIMES RATED CURRENT FOR 8 SECONDS

TEST SPECIFICATIONS:

INDUCTANCE:  
1.86 mH NOMINAL  
CAPACITANCE: MEASURED  $\theta$  1 KHz, 0.25 VAC MAX., 25°C  $\pm$ 1°C)  
LINE TO GROUND:  
LINE TO LINE:  
DISCHARGE RESISTOR  
1.5M $\Omega$   
LINE/GROUND AND LINE/LINE  
INSULATION RESISTANCE  
6000 M $\Omega$  (MIN) AT 100 VDC  
20°C AND 50% RH

RECOMMENDED RECEIVING INSPECTION HIPOT:

LINES TO GROUND:  
2250 VDC FOR 1 MINUTE  
LINE TO LINE:  
1450 VDC FOR 1 MINUTE

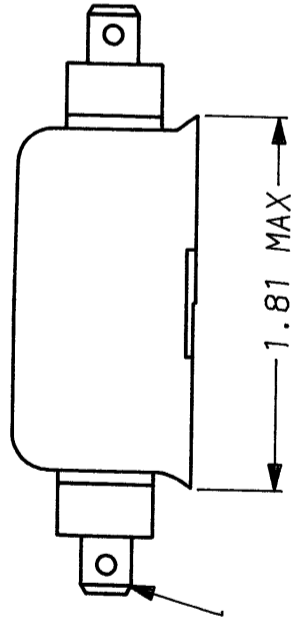
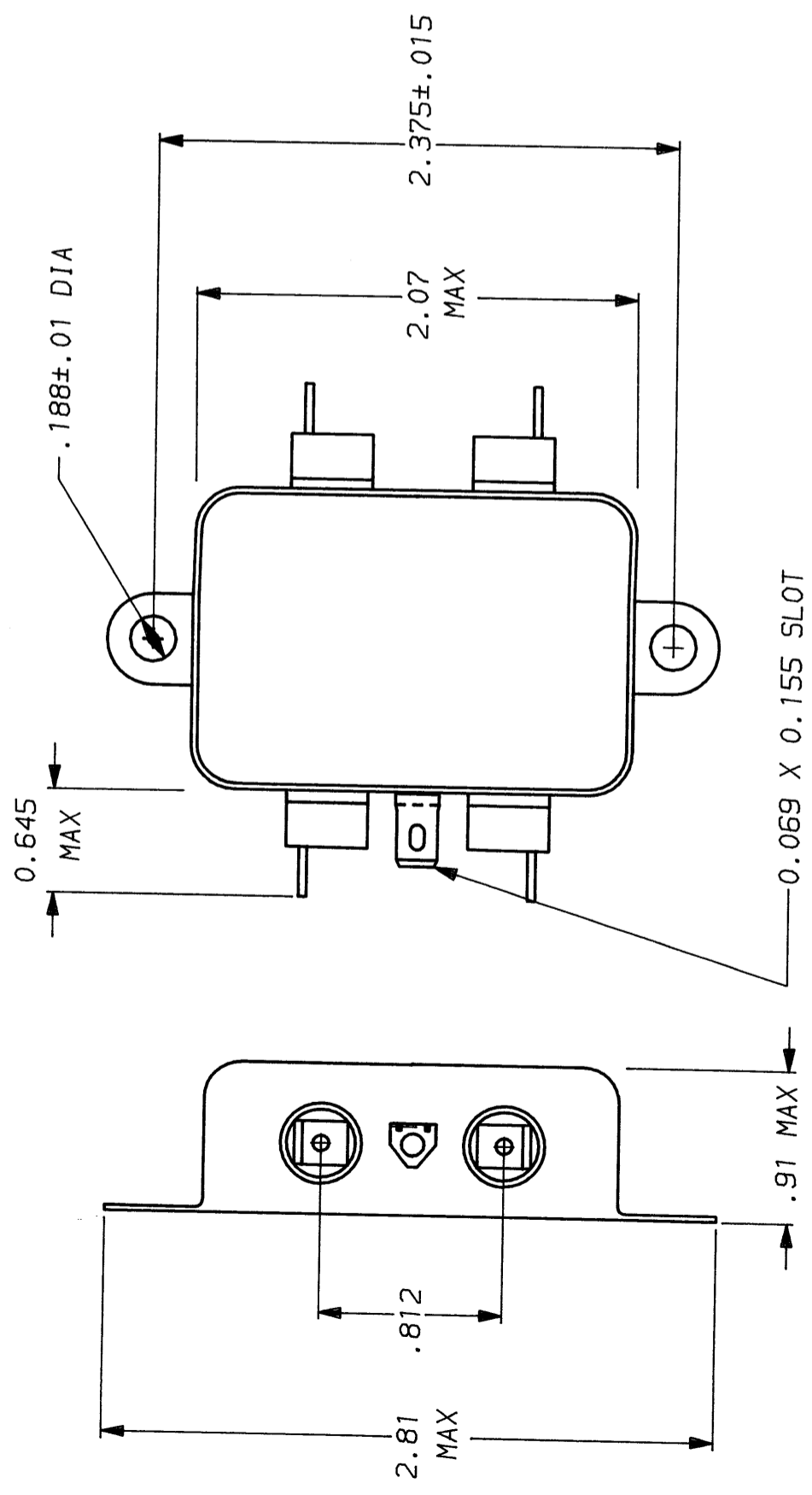
FILTER APPROVAL:

THE BEST WAY TO SELECT AND QUALIFY A FILTER IS FOR YOUR ENGINEERING TO TEST THE UNIT IN YOUR EQUIPMENT.

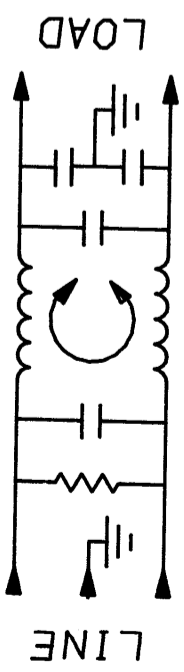
50 $\mu$  - 50 $\mu$  (MINIMUM) INSERTION LOSS

FREQUENCY MHz	.15	.3	.5	1	2	5	10	20	30
COMMON dB	17	27	35	44	50	50	50	50	50
DIFF. dB	3	3	30	50	60	60	50	45	50

This document is proprietary to CORCOM INC. and is not to be reproduced nor used for manufacturing purposes except on CORCOM's order or prior written consent.



.250 FASTON .069±.003 HOLE (5)



TOLERANCE EXCEPT AS NOTED

DECIMAL: .XXX .XX .X ANGLES  $\pm$  1.  
ENGLISH:  $\pm$ .025  
METRIC:  $\pm$  —

MATERIAL:

AS SUPPLIED

FINISH:

AS SUPPLIED



POWER LINE FILTER

SCALE	DATE	DRG. NO.	REV.
NTS	7-31-90		1 VK1.06
DRW. BY	ORIGINATOR		
CFW	CFW		